

USS CVN-71 VFA-97

TASK ID: HW-074968



BASIC INFO

START TIME 27-JUN-2011 0900LT (0500UTC)
 SCHED LAU TIME 0910LT CASE I DEP LOC N2439E5808
 EXP REC TIME 1030LT CASE I REC LOC N2452E5748
 HOME FREQ 305AM TCN 71X ILS 11 LINK4 336
 WX CLDY SR 0524LT SS 1906LT TEMP 26C QNH 2996 CLD 13K WIND 116 8KTS SEA 2 GD VSBY

FLIGHT

FLT	CS	T#	A/A	DLNK	LASER	WPN
Hawk 1	Hawk 1-1	211	11X	HK11	1681	9X,WE,WT,AC,DL,AFLIR,WT,WE,9X
	Hawk 1-2	212	12X	HK12	1682	9X,WE,WT,AC,DL,AFLIR,WT,WE,9X
	Hawk 1-3	213	13X	HK13	1683	9X,WE,WT,AC,DL,AFLIR,WT,WE,9X
	Hawk 1-4	214	14X	HK14	1684	9X,WE,WT,AC,DL,AFLIR,WT,WE,9X
Hawk 2	Hawk 2-1	215	21X	HK21	1685	9X,WE,WT,AC,DL,AFLIR,WT,WE,9X
	Hawk 2-2	216	22X	HK22	1686	9X,WE,WT,AC,DL,AFLIR,WT,WE,9X
	Hawk 2-3	217	23X	HK23	1687	9X,WE,WT,AC,DL,AFLIR,WT,WE,9X
	Hawk 2-4	218	24X	HK24	1688	9X,WE,WT,AC,DL,AFLIR,WT,WE,9X

PACKAGE

FLT	AC	NO.	TASK
Hawk 1	F/A-18C	4	Pinpoint Strike
Hawk 2	F/A-18C	4	Pinpoint Strike

SUPPORT

FLT	AC	TASK	A/A	CH	RMRK
Magic	E-2D	AWACS		2	Strike
Darkstar	E-3A	AWACS		4	Darkstar
Texaco	KC-135M	Refuel	53X	10	FL250
Arco	KC-130	Refuel	54X	11	FL200
Shell 1	S-3B	Refuel	51X	8	Standby
Shell 2	S-3B	Refuel	52X	9	Standby

FLIGHT PLAN (HAWK 1, 2)

WP	NAME	TIME	SPEED	ALT	RMRK
0	LAU	0910L			Launch
1	RV	0920L	0.60M	25K	Regroup
2	BAL	0932L	0.80M	30K	Fence In
3	IP	0937L	0.80M	30K	Arms
4	ROCK				Attack
5	EGR	1010L	0.75M	25K	Egress
6	REC	1030L			Landing

CODENAME

CODENAME	INTERPRETATION
Ballroom	Strait Operation Area (WP2-WP4)

RADIO COMMS

CH	CODE	AGCY	FREQ
1	Green 1	Marshal	305.00
2	Red 1	Strike	264.00
3	Red 2	Guardian	265.00
4	Red 3	Darkstar	256.00
5	Yellow 1	Hawk 1	254.00
6	Yellow 2	Hawk 2	250.00
7	Yellow 3	Hornet	270.00
8	Violet 1	Shell 1	257.00
9	Violet 2	Shell 2	255.00
10	Violet 3	Texaco	262.00
11	Violet 4	Arco	259.00
12	Orange 1	Devil	268.00
13	Orange 2	Chevy	269.00
14	Orange 3	Check	260.00
15	Blue 1	Hornet	263.00
16	Blue 2	Dodge	261.00
17	Blue 3	Ford	267.00
18	Indigo 1	Trek	251.00
19	Indigo 2	Viper	253.00
20	Indigo 3	Colt	266.00

ALT AFLD

AFLD	FREQ	COOR
Khasab	124.350	N26°11' E56°14'
Bandar e Jask	118.150	N25°39' E57°48'

**PRIMARY TARGET COORDIATES**

NO	TYPE	COOR (APPROX)	ELEV (FT)	DESCRIPTION	REMARK
A1	Ship	N 27°08'30" E 56°12'53"	0 MSL	Frigate Rezky	Alongside Terminal
A2	Ship	N 27°08'33" E 56°12'55"	0 MSL	Corvette Grisha	Alongside Terminal
A3	Ship	N 27°08'35" E 56°12'56"	0 MSL	La Combattante IIa	Alongside Terminal
A4	Ship	N 27°08'37" E 56°12'57"	0 MSL	La Combattante IIa	Alongside Terminal
A5	Ship	N 27°08'50" E 56°12'41"	0 MSL	Corvette Grisha	In Shipyard (Attack S-N)
A6	Sub	N 27°08'50" E 56°12'40"	0 MSL	SSK 877V Kilo Sub	In Shipyard (Attack S-N)

PRIMARY TARGET COORDIATES

NO	TYPE	COOR (APPROX)	ELEV (FT)	DESCRIPTION	REMARK
B1	Ship	N 27°08'37" E 56°12'29"	0 MSL	Tanker	At Berth
B2	Ship	N 27°08'39" E 56°12'34"	0 MSL	Tanker	At Berth
B3	Ship	N 27°08'28" E 56°12'27"	0 MSL	Cargoship	At Berth
B4	Ship	N 27°08'29" E 56°12'33"	0 MSL	Cargoship	At Berth
B5	Factory	N 27°08'19" E 56°12'38"	7 MSL	Fuel factory	On Land (Attack E-W)
B6	Factory	N 27°08'18" E 56°12'42"	7 MSL	Fuel factory	On Land (Attack E-W)

PRIMARY TARGET COORDIATES

NO	TYPE	COOR (APPROX)	ELEV (FT)	DESCRIPTION	REMARK
C1	Storage	N 27°08'40" E 56°12'25"	7 MSL	Fuel storage	8*Tanks
C2	Storage	N 27°08'40" E 56°12'34"	7 MSL	Fuel storage	6*Tanks
C3	Storage	N 27°08'42" E 56°12'57"	7 MSL	Fuel storage	8*Tanks
C4	Storage	N 27°08'27" E 56°12'55"	7 MSL	Fuel storage	6*Tanks

NOTE



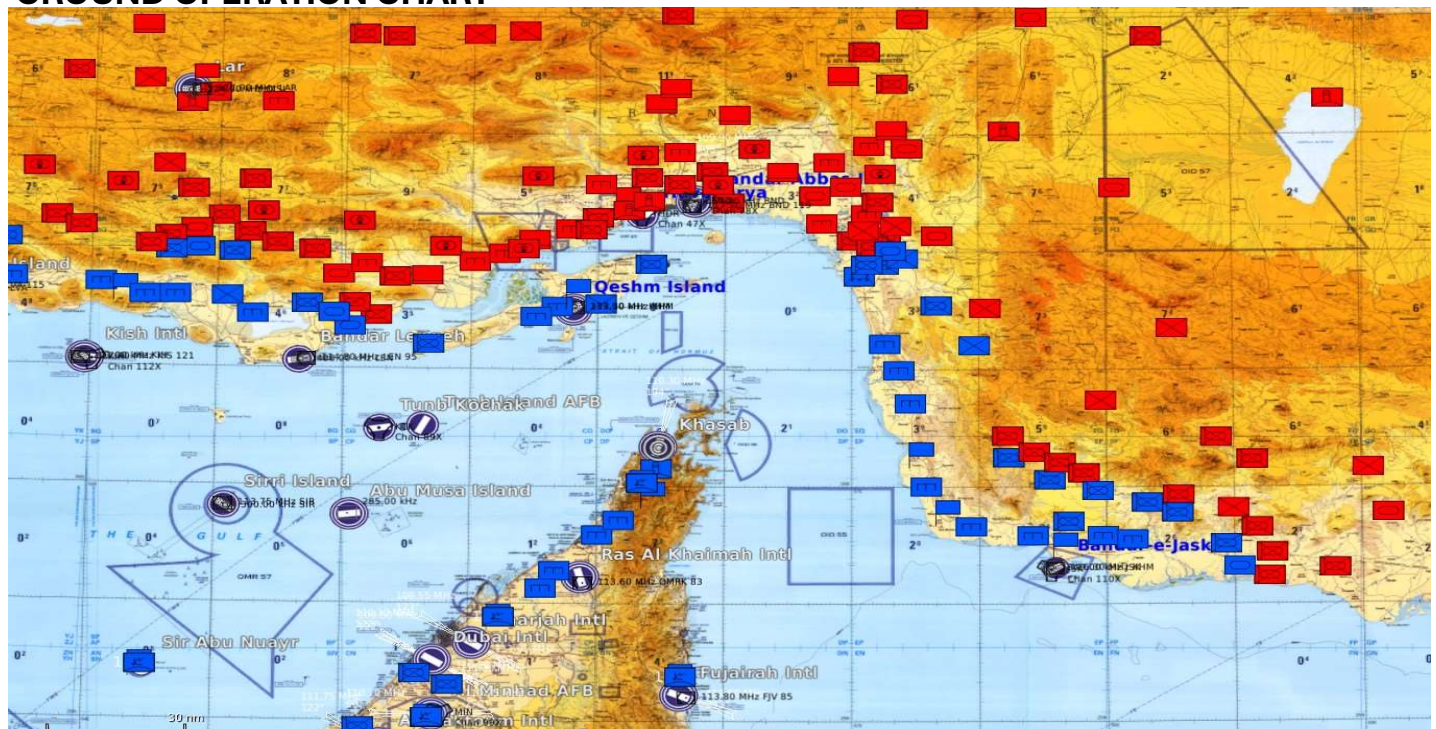
NOTE: WP2 CODENAME BALLROOM



AIR OPERATION CHART

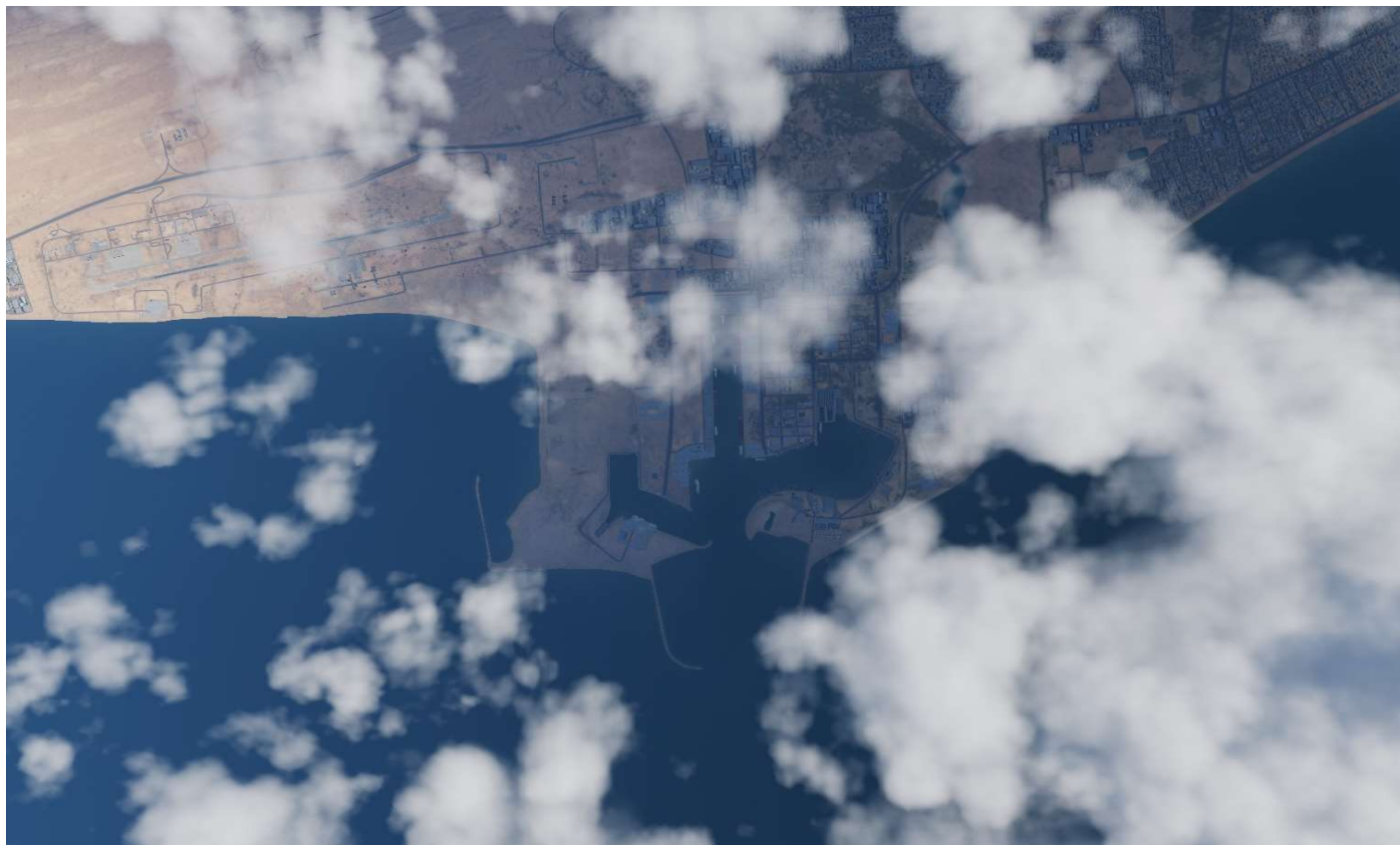


GROUND OPERATION CHART





SATELLITE IMAGE (DAYLIGHT 0400UTC)

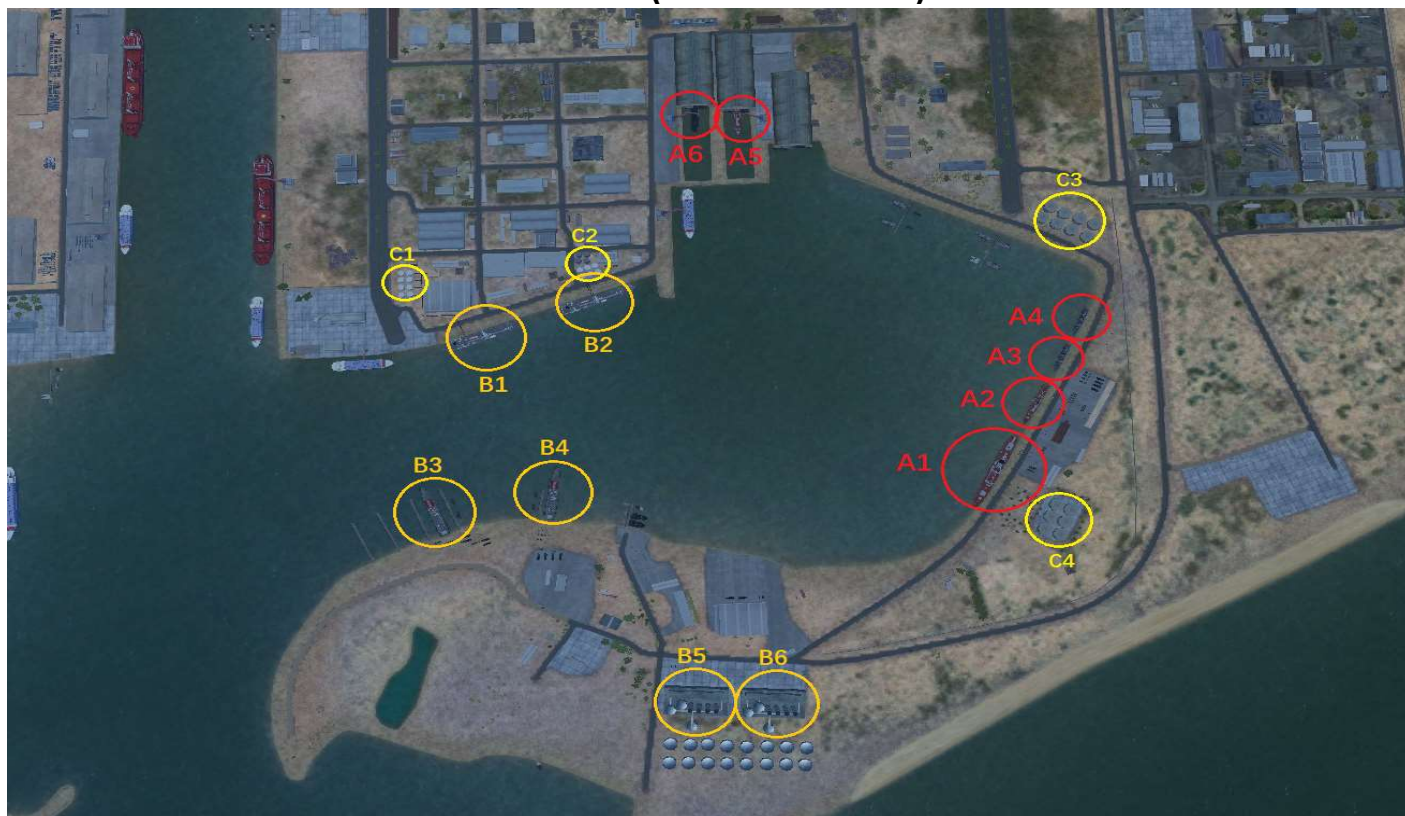


BANDAR ABBAS PORT LAYOUT





BANDAR ABBAS NAVAL BASE TARGETS (EAST BAY AREA)



UAV IMAGE (0400UTC)

